



# NEWSLETTER

SPRING 2021

PAHERITAGE.ORG

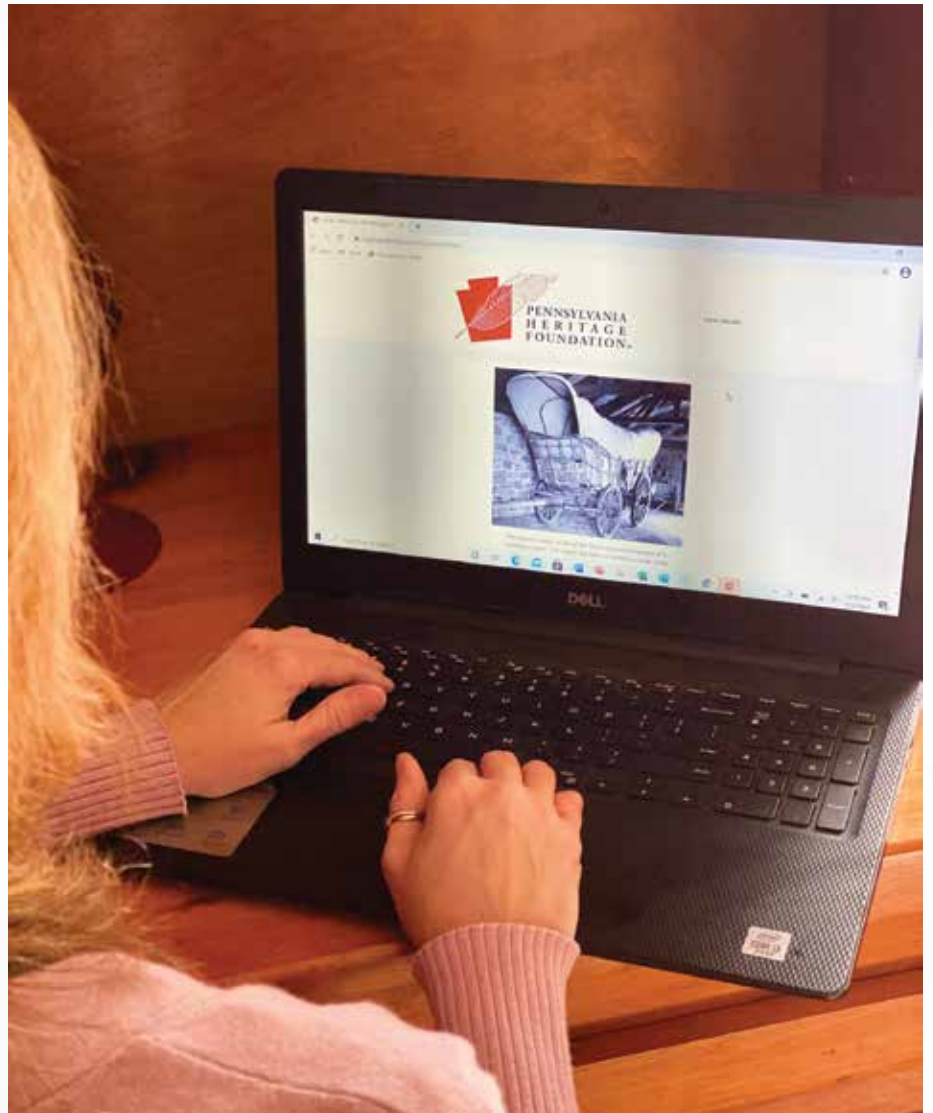
---

## E-Digest, New PHF Membership Benefit

As a benefit for its Individual, Family and Contributor members, PHF is now sending out a biweekly e-digest featuring links to historical content from around the commonwealth with a focus on the Pennsylvania Trails of History. The e-digest brings together stories about events in Keystone State history, famous Pennsylvanians, historic destinations, and archaeological excavations, with links to virtual programs, blogs, articles, and schedules of events on the Trails of History.

To find out more about PHF membership and its benefits, visit [paheritage.org](http://paheritage.org) or call 866-823-6539.

---



The Pennsylvania Heritage Foundation is the nonprofit partner of the Pennsylvania Historical & Museum Commission. Governed by a volunteer board, PHF helps preserve the commonwealth's rich heritage through charitable funding, membership, grant management, and community engagement.

## Trails of History Sites and Museums

### BRANDYWINE BATTLEFIELD PARK

Chadds Ford, 610-459-3342  
brandywinebattlefield.org

### BUSHY RUN BATTLEFIELD

Jeannette, 724-527-5584  
bushyrunbattlefield.com

### CONRAD WEISER HOME- STEAD

Womelsdorf, 610-589-2934  
conradweiserhomestead.org

### CORNWALL IRON FURNACE

Cornwall, 717-272-9711  
cornwallironfurnace.org

### DANIEL BOONE HOMESTEAD

Birdsboro, 610-582-4900  
danielboonehomestead.org

### DRAKE WELL MUSEUM

Titusville, 814-827-2797  
drakewell.org

### ECKLEY MINERS' VILLAGE

Weatherly, 570-636-2070  
eckleyminersvillage.com

### EPHRATA CLOISTER

Ephrata, 717-733-6600  
ephratacloister.org

### ERIE MARITIME MUSEUM AND FLAGSHIP NIAGARA

Erie, 814-452-2744  
flagshipniagara.org

### FORT PITT MUSEUM

Pittsburgh, 412-281-9285  
heinzhistorycenter.org/fort-pitt

### GRAEME PARK

Horsham, 215-343-0965  
graemepark.org

### HOPE LODGE

Fort Washington, 215-646-1595  
historichopelodge.org

## What Does PHF Do?

The Pennsylvania Heritage Foundation is the nonprofit partner of the Pennsylvania Historical & Museum Commission. The foundation helps support the programs of PHMC's bureaus—Pennsylvania State Archives, The State Museum of Pennsylvania, Historic Sites & Museums, and Pennsylvania State Historic Preservation Office (PA SHPO)—in several ways.

- Serves as the membership umbrella for PHMC and its historic sites, providing subscriptions to the commonwealth's history magazine, *Pennsylvania Heritage*, and other benefits.
- Supports educational programs across generations, such as the State Museum's Archaeology Workshops, visits for schoolchildren to PHMC's Trails of History sites, and production of PA SHPO's educational videos.
- Manages funds for PHMC projects and programs that support history, including administration at the Daniel Boone Homestead, The State Museum's annual *Art of the State* juried exhibition, and the State Archives' Scholars in Residence Program, as well as receptions, special events, and virtual programs.
- Fundraises for the preservation of valuable Pennsylvania treasures, from restoration of natural specimens and historic artifacts to preparation of exhibits.
- Provides access to the commonwealth's unique history on Trails of History websites, databases, social media, blogs and virtual programs through a resources navigation tab on the PHF website and a biweekly e-digest.

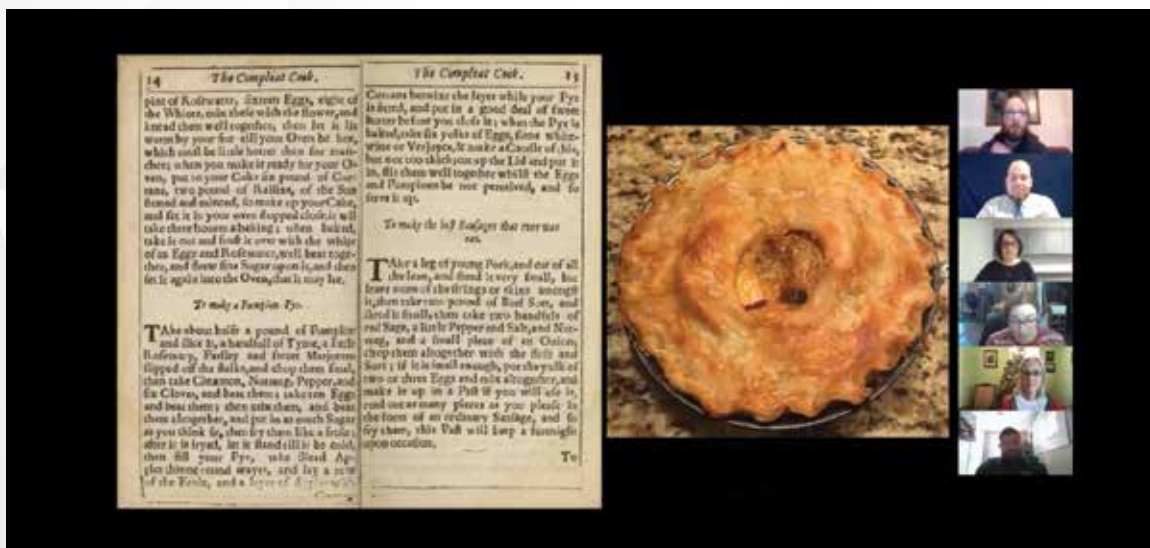
For more information on how you can help PHF in its mission through membership and donations, visit [paheritage.org](http://paheritage.org) or call 866-823-6539.



PHF partners with The State Museum of Pennsylvania for the annual *Art of the State* juried exhibition, which was presented virtually in 2020.



PHF recently managed the funds for the production of The State Museum's *Mammal Hall 360* virtual tour.



As PHMC has increased its virtual programming during the COVID-19 pandemic, PHF has provided another means for access through its website resources navigation tab. One virtual series, *PHMC Virtual Collections Showcase*, features programs with PHMC curators discussing artifacts related to particular themes, such this one on food.

## You Can Help Preserve Pennsylvania's History

You can make a difference in the preservation of Pennsylvania history by making a gift to the Pennsylvania Heritage Foundation through estate planning via your will or a charitable trust. Establishing a charitable trust is an appropriate way to control estate taxes, address family concerns, and direct legacy gifts to nonprofits, such as the Pennsylvania Heritage Foundation.

For more information on how to leave a legacy through estate or financial planning, contact PHF toll-free at (866) 823-6539 or RA-paheritage@pa.gov. An experienced volunteer consultant is available at no cost or obligation to respond to your questions. In all cases, however, you should seek counsel from your own professional advisors.



**PENNSYLVANIA  
HERITAGE**  
*Leave a Legacy*

**JOSEPH PRIESTLEY HOUSE**  
Northumberland, 570-473-9474  
josephpriestleyhouse.org

**LANDIS VALLEY VILLAGE  
& FARM MUSEUM**  
Lancaster, 717-569-0401  
landisvalleymuseum.org

**OLD ECONOMY VILLAGE**  
Ambridge, 724-266-4500  
oldeconomyvillage.org

**PENNSBURY MANOR**  
Morrisville, 215-946-0400  
pennsburymanor.org

**PENNSYLVANIA ANTHRA-  
CITE HERITAGE MUSEUM**  
Scranton, 570-963-4804  
anthracitemuseum.org

**PENNSYLVANIA LUMBER  
MUSEUM**  
Galeton, 814-435-2652  
lumbermuseum.org

**PENNSYLVANIA MILITARY  
MUSEUM**  
Boalsburg, 814-466-6263  
pamilmuseum.org

**PENNSYLVANIA  
STATE ARCHIVES**  
Harrisburg, 717-783-3281  
pastearchives.com

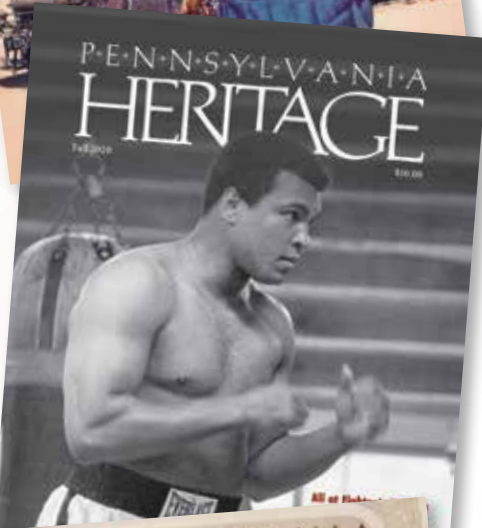
**RAILROAD MUSEUM OF  
PENNSYLVANIA**  
Strasburg, 717-687-8628  
rrmuseumpa.org

**SOMERSET HISTORICAL  
CENTER**  
Somerset, 814-445-6077  
somersethistoricalcenter.org

**THE STATE MUSEUM OF  
PENNSYLVANIA**  
Harrisburg, 717-787-4980  
statemuseumpa.org

**WASHINGTON CROSSING  
HISTORIC PARK**  
Washington Crossing, 215-493-4076  
washingtoncrossingpark.org

# Join the Pennsylvania Heritage Foundation and get a year's subscription to *Pennsylvania Heritage*!



## Heritage \$35

- subscription for one year of *Pennsylvania Heritage* (4 issues)

## Individual \$55

- one year of *Pennsylvania Heritage* (4 issues)
- free general admission for one adult to Pennsylvania Trails of History sites and museums\*
- Time Travelers privileges: free or discounted admission and gift shop discounts at more than 300 museums nationwide
- online member's portal access to information and activities
- biweekly e-digest with updates and history

## Family \$75

- one year of *Pennsylvania Heritage* (4 issues)
- free general admission for two adults in the same household and all children and grandchildren under age 18 to Pennsylvania Trails of History sites and museums\*
- Time Travelers privileges: free or discounted admission and gift shop discounts at more than 300 museums nationwide
- online member's portal access to information and activities
- biweekly e-digest with updates and history

## Contributor \$100

- one year of *Pennsylvania Heritage* (4 issues)
- free general admission for two adults in the same household and all children and grandchildren under age 18 to Pennsylvania Trails of History sites and museums\*
- Time Travelers privileges: free or discounted admission and gift shop discounts at more than 300 museums nationwide
- \$25.00 gift to the Pennsylvania Heritage Foundation and its support of presenting and preserving the history of Pennsylvania
- online member's portal access to information and activities
- biweekly e-digest with updates and history

*\*Some special events and tours at PHMC sites require an additional fee*



PENNSYLVANIA  
HERITAGE  
FOUNDATION®

Online: [paheritage.org](http://paheritage.org) Toll free: 866-823-6539

Mail:  
**Pennsylvania Heritage Foundation**  
400 North Street  
Harrisburg, PA 17120-0053



Name \_\_\_\_\_ Address \_\_\_\_\_ City \_\_\_\_\_ State \_\_\_\_\_ Zip \_\_\_\_\_

Telephone (with area code) \_\_\_\_\_ Email \_\_\_\_\_

Membership (circle one):    \$35 Heritage    \$55 Individual    \$75 Family    \$100 Contributor

Enclosed is my check or money order payable to Pennsylvania Heritage Foundation

Please charge my credit card (circle one):    Credit card number \_\_\_\_\_ Exp. date \_\_\_\_\_ CVV \_\_\_\_\_

VISA    MasterCard    Discover    AmEx

Authorized Signature \_\_\_\_\_