

Follow Us

paheritage.org
facebook.com/PennsylvaniaHeritageFoundation
patrailheads.blogspot.com
facebook.com/PATrailsOfHistory
twitter.com/PHMC

NEWSLETTER

WINTER 2017

PAHERITAGE.ORG

PHF Enhances Membership with Members-Only Events

On October 20 and November 28, PHF welcomed members for private behind-the-scenes tours of the restoration of Mammal Hall. Members gathered to watch the work in progress and to interact with the restoration team, led by Steve Quinn (formerly of the American Museum of Natural History). Jim Vaughan, executive director of Pennsylvania Historical and Museum Commission, joined PHF staff and guests for refreshments and provided updates on PHMC priorities.

Mammal Hall, with its 13 world-class dioramas of wild animals in their habitats, has remained one of the most popular and iconic exhibits in The State Museum since its installation in 1968. The project to restore the entire exhibit began in early 2015. To date, restoration of the red fox and gray fox dioramas has been completed.

Visit the PHF website to learn about future member events: www.paheritage.org



Jim Vaughan, PHMC executive director, informs PHF members about the detailed restoration work on Mammal Hall.

PHMC/PHOTO BY DON GILES

The Giving Circle

Become a member of our Giving Circle

Members are those who support PHF at the highest level by donating \$1,000 or more on an annual basis. PHF helps PHMC protect and provide access to PHMC's 24 historic sites and museums, 5 million objects and 237 million archival items. This key contribution is integral in helping us educate and enrich the lives of Pennsylvanians in the present and future.

Giving Circle members get first priority for PHF updates and events and receive special recognition annually in our printed materials and at various events. Members provide leadership and inspiration to all of those who consider supporting the work at PHF. Please join today.

Contact PHF at 717-787-2407 or RA-paheritage@pa.gov.



HIGHLIGHTS

Trails of History Sites and Museums

BRANDYWINE BATTLEFIELD PARK
Chadds Ford, 610-459-3342
brandywinebattlefield.org

BUSHY RUN BATTLEFIELD
Jeannette, 724-527-5584
bushyrunbattlefield.com

CONRAD WEISER HOMESTEAD
Womelsdorf, 610-589-2934
conradweiserhomestead.org

CORNWALL IRON FURNACE
Cornwall, 717-272-9711
cornwallironfurnace.org

DANIEL BOONE HOMESTEAD
Birdsboro, 610-582-4900
danielboonehomestead.org

DRAKE WELL MUSEUM
Titusville, 814-827-2797
drakewell.org

ECKLEY MINERS' VILLAGE
Weatherly, 570-636-2070
eckleyminersvillage.com

EPHRATA CLOISTER
Ephrata, 717-733-6600
ephratacloister.org

ERIE MARITIME MUSEUM AND FLAGSHIP NIAGARA
Erie, 814-452-2744
flagshipniagara.org

FORT PITT MUSEUM
Pittsburgh, 412-281-9285
heinzhistorycenter.org/fort-pitt

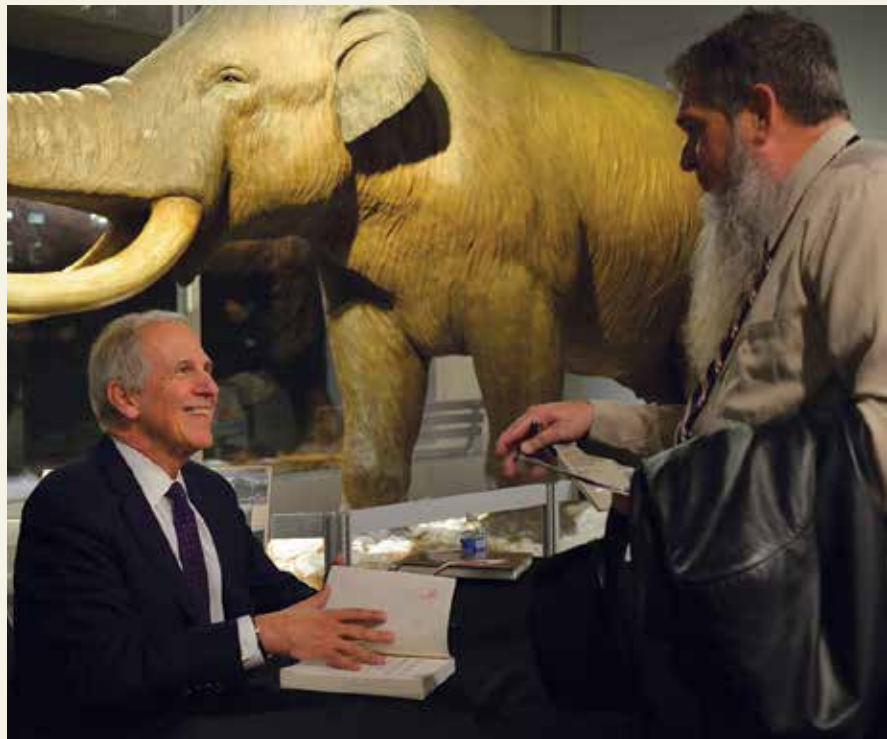
GRAEME PARK
Horsham, 215-343-0965
graemepark.org

HOPE LODGE
Fort Washington, 215-646-1595
historichopelodge.org

Brent D. Glass Presentation and Book Signing

On October 26, former executive director of PHMC and director emeritus of the Smithsonian National Museum of American History Brent D. Glass spoke at The State Museum of Pennsylvania and signed copies of his new book, *50 Great American Places: Essential Historic Sites Across the U.S.*

The book—now available for purchase in The State Museum Store in time for the holidays—highlights some of the most important cultural and historic sites in the country.



Brent D. Glass signs copies of *50 Great American Places* after his presentation.
PHMC/PHOTO BY DON GILES



PHMC/PHOTO BY DON GILES

Night of the Great Pumpkin a Smashing Success

On October 14, The State Museum of Pennsylvania hosted its annual Night of the Great Pumpkin, a family event with crafts, treats, animals and a special presentation of *Grossology and You* in the Planetarium. More than 1,800 people attended.



PHMC/PHOTO BY DON GILES

Powell Donation Helps Fund Mammal Hall Restoration

PHF recently received a pledge of \$25,000 from PHMC commissioner Frederick C. Powell and his wife Becky to offset the expenses for restoration of the gray wolf diorama in Mammal Hall at The State Museum of Pennsylvania.

Powell is founder and CEO of OMNI Interactive Systems, in Lemoyne, which custom designs and installs electronic systems for homes and businesses. Previously, he founded and served as chairman, president and CEO of Rehab Systems Co., building and operating rehabilitation hospitals around the United States.

Born in Meadville, Crawford County, Powell is the descendant of a long line of rural Pennsylvanians. His grandparents made their living as farmers in the state, and his great-great-grandfather Thomas Powell was a gunsmith and friend of the Seneca chief and diplomat Cornplanter.

Powell has long been an advocate for PHMC programs. In 2010, he received the agency's Chairman's Special Recognition Award for serving as chair (with Pete Shelly) of The State Museum's Buy-a-Bone campaign, an effort that raised funds to restore the 12,000-year-old skeleton of the Marshalls Creek Mastodon and mount it in the museum's Paleontology Gallery. He also has been a frequent speaker at State Historical Marker dedications. Powell has served as a PHMC commissioner since 2011 and has been instrumental in leadership and fundraising efforts for the agency.

PHF and PHMC are grateful to the Powells for their generous financial support, which will be vital for moving the restoration project into its next stage.

JOSEPH PRIESTLEY HOUSE
Northumberland, 570-473-9474
josephpriestleyhouse.org

**LANDIS VALLEY VILLAGE
AND FARM MUSEUM**
Lancaster, 717-569-0401
landisvalleymuseum.org

OLD ECONOMY VILLAGE
Ambridge, 724-266-4500
oldeconomyvillage.org

PENNSBURY MANOR
Morrisville, 215-946-0400
pennsburymanor.org

**PENNSYLVANIA
ANTHRACITE HERITAGE
MUSEUM**
Scranton, 570-963-4804
anthracitemuseum.org

**PENNSYLVANIA LUMBER
MUSEUM**
Galeton, 814-435-2652
lumbermuseum.org

**PENNSYLVANIA MILITARY
MUSEUM**
Boalsburg, 814-466-6263
pamilmuseum.org

**PENNSYLVANIA
STATE ARCHIVES**
Harrisburg, 717-783-3281
pastatearchives.com

**RAILROAD MUSEUM OF
PENNSYLVANIA**
Strasburg, 717-687-8628
rrmuseumpa.org

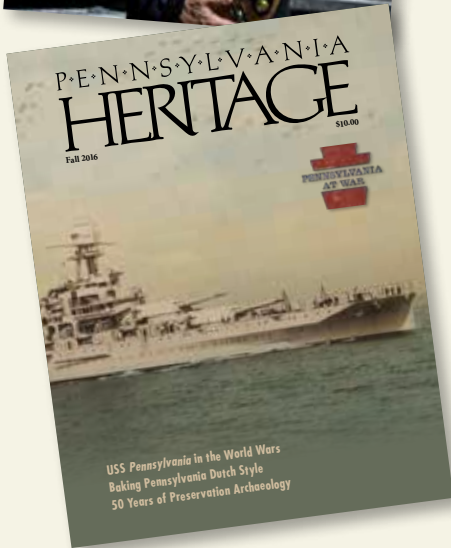
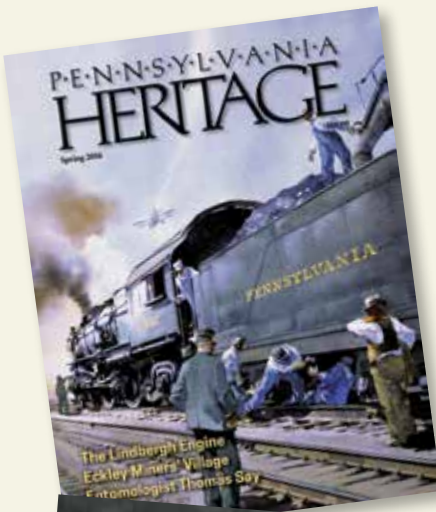
**SOMERSET HISTORICAL
CENTER**
Somerset, 814-445-6077
somersethistoricalcenter.org

**THE STATE MUSEUM OF
PENNSYLVANIA**
Harrisburg, 717-787-4980
statemuseumpa.org

**WASHINGTON CROSSING
HISTORIC PARK**
Washington Crossing,
215-493-4076
washingtoncrossingpark.org

Discover the historic legacy and rich culture of the Keystone State

Join the Pennsylvania Heritage Foundation and get a year's subscription to *Pennsylvania Heritage*!



Heritage \$35

- one year of *Pennsylvania Heritage* (4 issues)

Individual \$55

- the above, *plus*
- free admission for one adult to Pennsylvania Trails of History sites and museums*
- Time Travelers privileges: free or discounted admission and gift shop discounts at more than 200 museums nationwide

Family \$75

- the above, *plus*
- free admission for two adults in the same household and all children and grandchildren under age 18 to Pennsylvania Trails of History sites and museums*

*Some special events at PHMC sites require an additional fee

How to Join

By mail:
 Pennsylvania Heritage Foundation
 400 North Street
 Harrisburg, PA 17120-0053

By phone: Toll free at 866-823-6539



Commonwealth Keystone Building
 400 North Street, Plaza Level
 Harrisburg, PA 17120-0053
 717-787-2407
 866-823-6539 Toll-Free
 800-654-5984 PA TDD
 717-346-9099 FAX
 paheritage.org
 RA-paheritage@pa.gov

The Pennsylvania Heritage Foundation supports the work of the Pennsylvania Historical and Museum Commission (PHMC), in collaboration with partner organizations, through fund development, grant management, membership, merchandising and advocacy.

Name _____ Address _____ City _____ State _____ Zip _____

Telephone (with area code) _____ Email _____

Enclosed is my check or money order for \$____ payable to Pennsylvania Heritage Foundation

Please charge my credit card: Credit card number _____ Exp. date _____

VISA MasterCard (circle one) Authorized Signature _____