

# NEWSLETTER

SUMMER 2016

PAHERITAGE.ORG

## Giving Circle Dinner

On April 7, 2016, the Pennsylvania Heritage Foundation held the annual Giving Circle Dinner at The State Museum of Pennsylvania in Harrisburg to thank Giving Circle-level donors who gave \$1,000 or more in support of the Pennsylvania Historical and Museum Commission during the previous calendar year. Guests previewed the new exhibit *Working Together for Wildlife*, mounted by PHMC in partnership with the Pennsylvania Game Commission (see page 46). PHF and PHMC leadership also shared information about current and future initiatives.

PHF is grateful to all of its supporters for helping to protect and share Pennsylvania's wonderful treasures.



Anne Yellott, PHF board treasurer, and Bill Murphey view the *Working Together for Wildlife* exhibit at The State Museum.

Flora Posteraro, abc27 news anchor, and Mark Compton, CEO of the Pennsylvania Turnpike Commission, at the Giving Circle Dinner.

PHMC/PHOTOS BY DON GILES

## The Giving Circle

### *Become a member of our Giving Circle*

Members are those who support PHF at the highest level by donating \$1,000 or more on an annual basis. PHF helps PHMC protect and provide access to PHMC's 24 historic sites and museums, 5 million objects and 237 million archival items. This key contribution is integral in helping us educate and enrich the lives of Pennsylvanians in the present and future.

Giving Circle members get first priority for PHF updates and events and receive special recognition annually in our printed materials and at various events. Members provide leadership and inspiration to all of those who consider supporting the work at PHF. Please join today.

Contact PHF at 717-787-2407 or RA-paheritage@pa.gov.



# HIGHLIGHTS

## Trails of History Sites and Museums\*

BRANDYWINE  
BATTLEFIELD PARK  
Chadds Ford, 610-459-3342  
brandywinebattlefield.org

BUSHY RUN BATTLEFIELD  
Jeannette, 724-527-5584  
bushyrunbattlefield.com

CONRAD WEISER  
HOMESTEAD  
Womelsdorf, 610-589-2934  
conradweiserhomestead.org

CORNWALL IRON FURNACE  
Cornwall, 717-272-9711  
cornwallironfurnace.org

DANIEL BOONE  
HOMESTEAD  
Birdsboro, 610-582-4900  
danielboonehomestead.org

DRAKE WELL MUSEUM  
Titusville, 814-827-2797  
drakewell.org

ECKLEY MINERS' VILLAGE  
Weatherly, 570-636-2070  
eckleyminersvillage.com

EPHRATA CLOISTER  
Ephrata, 717-733-6600  
ephratacloister.org

ERIE MARITIME MUSEUM  
AND FLAGSHIP NIAGARA  
Erie, 814-452-2744  
flagshipniagara.org  
eriemaritimemuseum.org

FORT PITT MUSEUM  
Pittsburgh, 412-281-9285  
heinzhistorycenter.org

GRAEME PARK  
Horsham, 215-343-0965  
graemepark.org

HOPE LODGE  
Fort Washington, 215-646-1595  
ushistory.org/hope

\*Be sure to check hours before visiting.

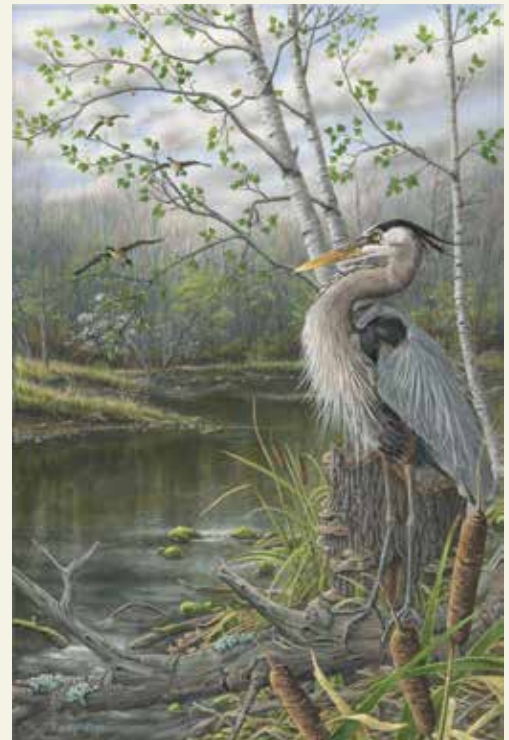
## Pennsylvania Wildlife Art Exhibit Opens

A new special exhibit at The State Museum of Pennsylvania, *Working Together for Wildlife: Three Decades of Pennsylvania's Nature in Art*, features 34 original paintings from the collection of the Pennsylvania Game Commission. Since the early 1980s, the Game Commission has hosted a juried art competition called *Working Together for Wildlife*, open to Pennsylvania artists. Winning artwork has been made available in special edition prints and patches, with the proceeds benefitting the preservation and maintenance of Pennsylvania's wildlife.

Now the entire collection of winning works is on public exhibition for the first time. In the tradition of the Pennsylvania naturalist-artists Alexander Wilson, John James Audubon and Ned Smith, the *Working Together for Wildlife* artists depict the beauty of animals in their natural habitats. The works highlight both game and nongame animals, including the black bear, the bobcat, the gray squirrel, the great blue heron, the cardinal and the Pennsylvania state bird, the ruffed grouse.

Select prints of the wildlife art and coordinating souvenir embroidered patches are currently available for purchase in The State Museum Store for a limited time.

The *Working Together for Wildlife* exhibit, presented by the Pennsylvania Historical and Museum Commission and the Pennsylvania Game Commission, is mounted in The State Museum's Natural History Changing Exhibits Gallery, adjacent to Mammal Hall, and runs through September 11, 2016.



*Blue Haze* by Randy Zigo, depicting the great blue heron, is the *Working Together for Wildlife* winning artwork for 2016.

COURTESY PENNSYLVANIA GAME COMMISSION

## Pennsylvania Chamber of Business and Industry Day

On July 10, 2016, PHF and The State Museum will host members of the Pennsylvania Chamber of Business and Industry and their families at The State Museum. This event is free to members of the chamber. If you are a member and would like to attend, please contact the chamber at 800-225-7224.



# Naturalist Scott Weidensaul to Speak at The State Museum

Renowned author and naturalist Scott Weidensaul will discuss his latest book *Mountains of the Heart: A Natural History of the Appalachians* at The State Museum in Harrisburg on Sunday, August 7, 2016, at 2pm. The speaking engagement will be held in the museum's auditorium.

PHF and The State Museum are excited to offer this special event free of charge to PHF members (including State Museum Affiliates) and also members of the Ned Smith Center for Nature and Art. Additional seats will be available to the public and are included in the price of admission to the museum. Registration is required.

Following Weidensaul's presentation, Acting Director of The State Museum Beth Hager will lead a tour of the new exhibit *Working Together for Wildlife: Three Decades of Pennsylvania's Nature in Art*, for which she was exhibit curator.

For more information or to register, contact PHF at 717-787-2407.



©AMIRAN WHITE

## Lulos Joins PHF Board



George S. Lulos has recently joined the board of the Pennsylvania Heritage Foundation. A commercial real estate professional since 1983, he is currently senior vice president of Colliers International and a founding partner of Crossroads Commercial Realty. With offices in Harrisburg, Dauphin County, and Johnstown, Cambria County, he is a specialist in investment sales and retail leasing across a broad region of the Mid-Atlantic.

Lulos' first career was in academia and included teaching and administrative positions at Rutgers University, Educational Testing Service, Princeton University, Glassboro State College (now Rowan University) and Temple University. He has bachelor's and master's degrees from Rutgers University in English, American studies, and psychology and philosophy of education.

Lulos is an active member of the Urban Land Institute and the International Council of Shopping Centers and is a life member of American Mensa and the World Future Society. He lives in Johnstown and also maintains a residence in Enola, Cumberland County, with his wife of 43 years, Rosemary. He has a son, a daughter, two grandsons and a large extended family.

### Trails of History Sites and Museums\*

JOSEPH PRIESTLEY HOUSE  
Northumberland, 570-473-9474  
josephpriestleyhouse.org

LANDIS VALLEY VILLAGE  
AND FARM MUSEUM  
Lancaster, 717-569-0401  
landisvalleymuseum.org

OLD ECONOMY VILLAGE  
Ambridge, 724-266-4500  
oldeconomyvillage.org

PENNSBURY MANOR  
Morrisville, 215-946-0400  
pennsburymanor.org

PENNSYLVANIA  
ANTHRACITE HERITAGE  
MUSEUM  
Scranton, 570-963-4804  
anthracitemuseum.org

PENNSYLVANIA LUMBER  
MUSEUM  
Galeton, 814-435-2652  
lumbermuseum.org

PENNSYLVANIA MILITARY  
MUSEUM  
Boalsburg, 814-466-6263  
pamilmuseum.org

RAILROAD MUSEUM OF  
PENNSYLVANIA  
Strasburg, 717-687-8628  
rrmuseumpa.org

SOMERSET HISTORICAL  
CENTER  
Somerset, 814-445-6077  
somersethistoricalcenter.org

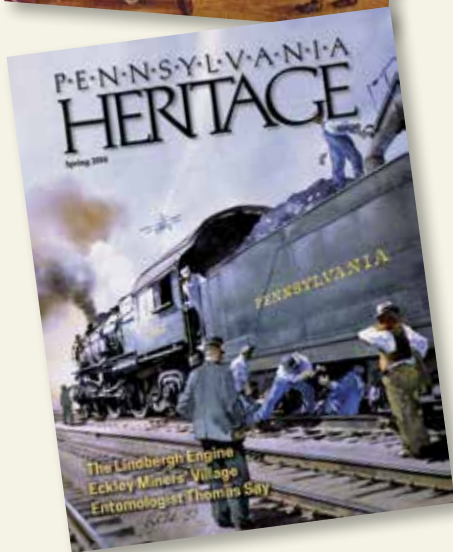
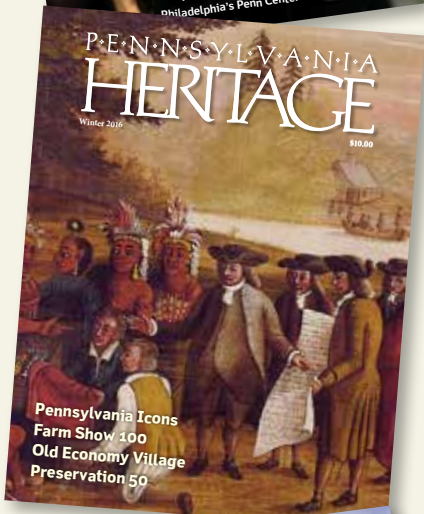
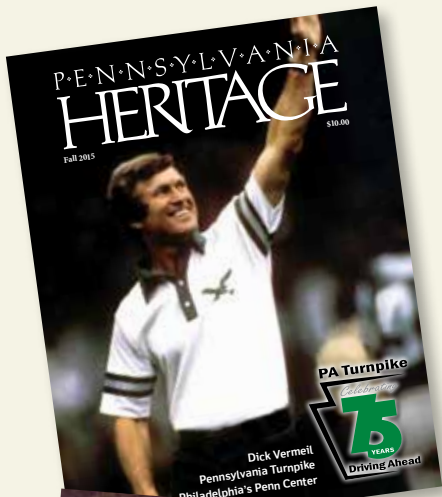
THE STATE MUSEUM OF  
PENNSYLVANIA  
Harrisburg, 717-787-4980  
statemuseumpa.org

WASHINGTON CROSSING  
HISTORIC PARK  
Washington Crossing,  
215-493-4076  
ushistory.org/washingtoncrossing

\*Be sure to check hours before visiting.

# Discover the historic legacy and rich culture of the Keystone State

Join the Pennsylvania Heritage Foundation and get a year's subscription to *Pennsylvania Heritage*!



## Heritage \$30

- one year of *Pennsylvania Heritage* (4 issues)

## Individual \$50

- the above, *plus*
- free admission for one adult to Pennsylvania Trails of History sites and museums\*
- Time Travelers privileges: free or discounted admission and gift shop discounts at more than 200 museums nationwide

## Family \$70

- the above, *plus*
- free admission for two adults and all children and grandchildren under age 18 to Pennsylvania Trails of History sites and museums\*


\*Some special events at PHMC sites require an additional fee

## How to Join

### By mail:

Pennsylvania Heritage Foundation  
400 North Street  
Harrisburg, PA 17120-0053

**By phone:** Toll free at 866-823-6539



Commonwealth Keystone Building  
400 North Street, Plaza Level  
Harrisburg, PA 17120-0053  
717-787-2407  
866-823-6539 Toll-Free  
800-654-5984 PA TDD  
717-346-9099 FAX  
paheritage.org  
RA-paheritage@pa.gov

The Pennsylvania Heritage Foundation supports the work of the Pennsylvania Historical and Museum Commission (PHMC), in collaboration with partner organizations, through fund development, grant management, membership, merchandising and advocacy.

Name \_\_\_\_\_ Address \_\_\_\_\_ City \_\_\_\_\_ State \_\_\_\_\_ Zip \_\_\_\_\_

Telephone (with area code) \_\_\_\_\_ Email \_\_\_\_\_

Enclosed is my check or money order for \$\_\_\_\_ payable to Pennsylvania Heritage Foundation

Please charge my credit card: Credit card number \_\_\_\_\_ Exp. date \_\_\_\_\_

VISA    MasterCard (circle one)      Authorized Signature \_\_\_\_\_